

**FOR HEAT TREAT ATMOSPHERES**

**FEATURES**

- Accurate, affordable infrared measurement of CO, CO<sub>2</sub>, and CH<sub>4</sub>
- Computation of % Carbon, Dew-point and expected O<sub>2</sub> probe millivolts
- Easy to read 7 in. LCD display with touchscreen
- Built-in Ethernet
- USB 2 high speed port for data retrieval
- CQI-9 compliant encrypted data logging and on-screen charts
- Long life, quick-change lithium ion battery with charge indicator (spare batteries available)
- High-volume long-lasting filter and a secondary, self-contained, long-lasting sub-micronic filter
- Handy Process Calculator
- Built-in purge port satisfies safety requirements

**BENEFITS**

- Accurate calculation of atmosphere carbon potential
- Verification of oxygen probe accuracy
- Easy identification of furnace atmosphere problems and furnace condition
- Evaluation of Endo and Exo generator performance, and catalyst condition
- Optimize nitrogen methanol system performance
- Easy retrieval of data logged gas analysis

**EXTENDED MEASUREMENT RANGES**

For both endothermic & exothermic furnace atmospheres. Can verify any process that uses "lean" or "rich" exothermic atmospheres such as bright annealing, brazing, or lamination annealing.

**FOR CQI-9 COMPLIANCE**



Get CQI-9 compliant while improving control over your process



FurnaceDoctor®-Pro		www.group-upc.com	
CO [%]	19.6	CP [%]	0.14
CO2 [%]	1.000	C [%]	0.14
CH4 [%]	10.13	C+CH4 [%]	0.55
H2 [%]	40	O2 [mV]	1,035
°F	1,699	DPT [°F]	75
Alloy Factor [%]	100	Logging: OFF	<b>Change</b>
CH4 Factor [%]	65.0	***	
Furnace Mode	<b>Change</b>	<b>Main Menu</b>	
Endo Mode	<b>Change</b>		

## ADDITIONAL FEATURES

- Enter furnace temperature into the analyzer to compute:
  - Equivalent % Carbon potential
  - Expected probe millivolts for that % Carbon at that temperature
  - Dew point
  - Process Calculator for computing % Carbon or Dewpoint from known or measured furnace atmosphere values
- VNC server for remote and real-time access to analyzer
- Optional wireless network connection to plant network for data logging

## CALIBRATION

- UPC provides calibration to primary standard-grade gases in our facility. A calibration certificate is provided to satisfy your in-house documentation requirements.
- We also supply traceable certified grade gas cylinders and associated equipment for calibration in your facility.

## SPECIFICATIONS & OPERATING CONDITIONS

CHARACTERISTICS	CO2	CO	CH4
Ranges			
- Endothermic	0-2%	0-30%	0-10%
- Exothermic	0-20%	0-20%	0-10%
Resolution	20 ppm	0.02%	0.02%
Accuracy	1% of range	2% of range	2% of range
Operating Temperature	40-120 °F (4-49 °C)		
Relative Humidity	5% - 90% non-condensing		
Stability	<±2% over 12 months		
Repeatability	Zero ±0.3%, Span ±1.5%		
Power Requirements	Analyzer: 15VDC internal battery Charger: 10-220 VAC, 50-60 Hz		

## FOR CQI-9 COMPLIANCE

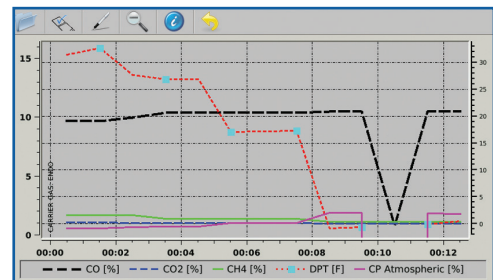
### Suitable for:

- Annealing
- Austempering
- Carbon Correction
- Carbonitriding
- Carburizing
- Martempering
- Neutral Hardening
- Normalizing
- Precipitation Hardening
- Stress-Relieving

If your process is not listed above, please call us for assistance.

Handy Process Calculator

Operator Log Notes Screen



Example of a Log Screen

USA

+1 414 462 8200  
sales.na@group-upc.com

CANADA

+1 514 335 7191  
sales.na@group-upc.com

CHINA

+86 21 3463 0376  
sales@mmichina.cn

FRANCE

+33 3 81 48 37 37  
sales.fr@group-upc.com

GERMANY

+49 7161 94888 0  
sales.de@group-upc.com

POLAND

+48 32 296 66 00  
sales.pl@group-upc.com