

Furnace Dr Pro - Ethernet

USER MANUAL

Version Number 3



COPYRIGHT^(C)

No part of this publication may be reproduced, transmitted, transcribed, stored in a retrieval system, or translated into any language or computer language, in any form or by any means, electronic, mechanical, magnetic, optical, chemical, manual, or otherwise, without prior written permission of FURNACE CONTROL CORP.

DISCLAIMER:

The FDPRO is to be used by the industrial operator under his/her direction. Furnace Control Corp. is not responsible or liable for any product, process, damage or injury incurred while using the FDPRO. Marathon Monitors Inc. makes no representations or warranties with respect to the contents hereof and specifically disclaims any implied warranties or merchantability or fitness for any particular purpose.

For assistance please contact:

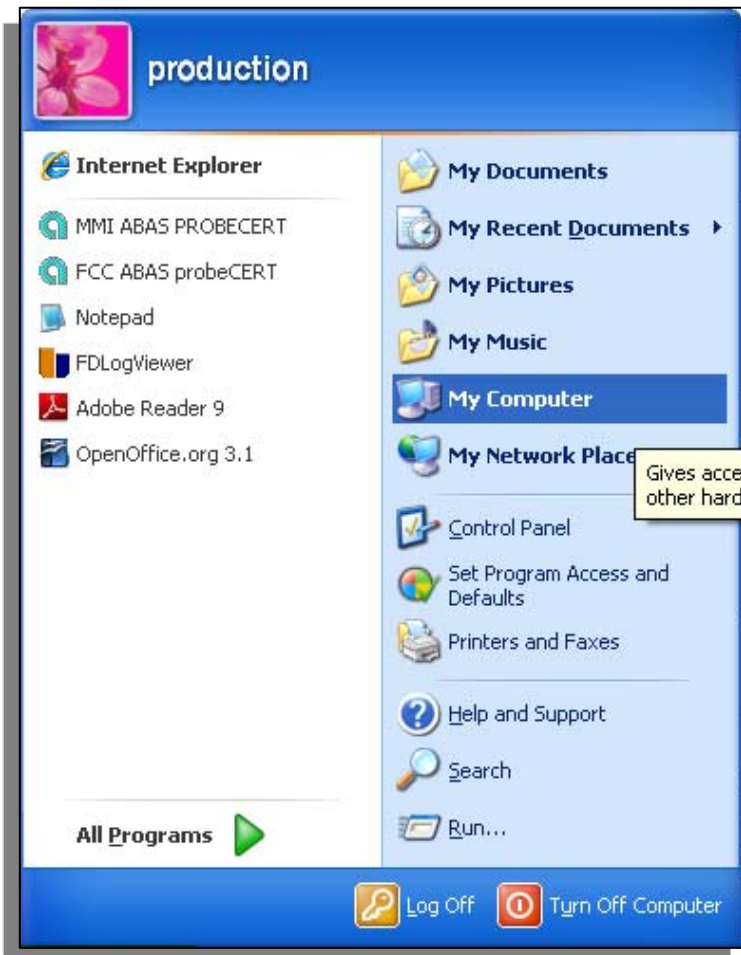
Furnace Control Corp.
TEL: +1 513 772 1000 • FAX: +1 513 326 7090
Toll-Free North America +1-800-547-1055
erika.leeds@group-upc.com
www.group-upc.com

TABLE OF CONTENTS

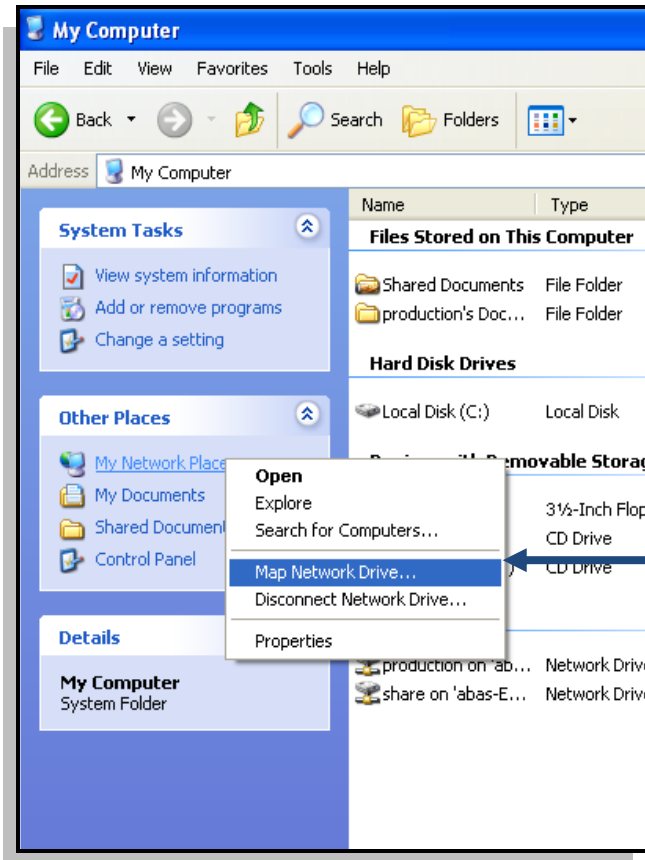
SETUP 4

SETUP

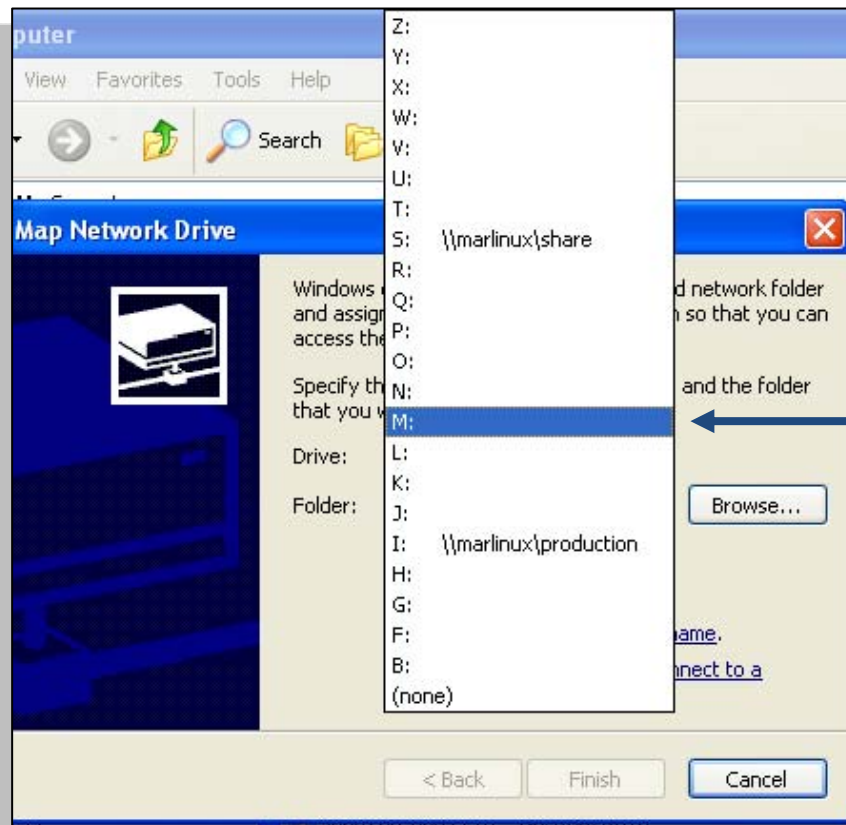
To use your computer to browse to the Log files on your Furnace Dr PRO you will need to setup your network.



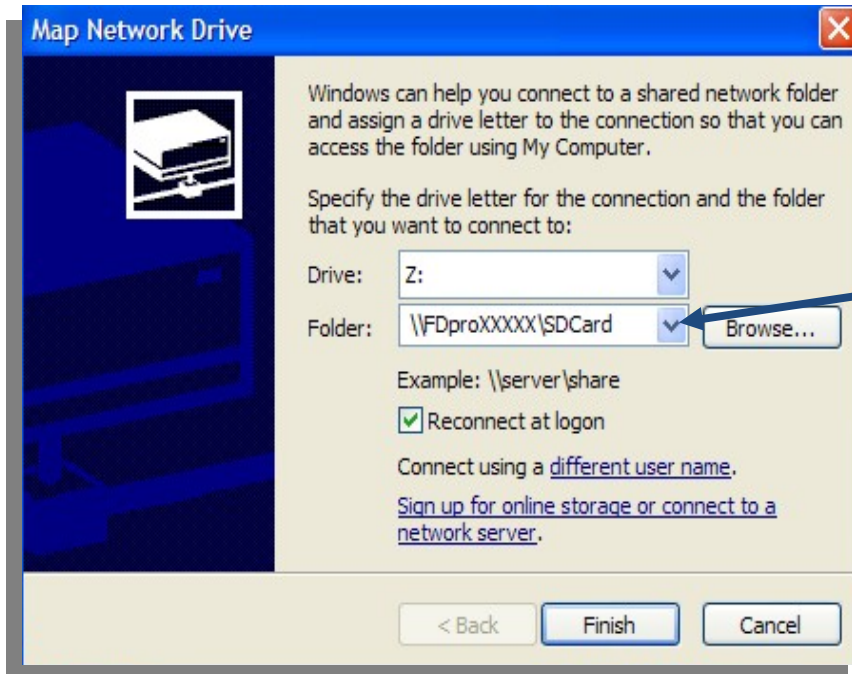
1. Start by navigating to My Computer from Windows Explorer. (Push 'Start' button or push 'Windows key' + E at the same time.)



2. Right click on My Network then go down and click on Map Network Drive



3. Select the Drive Letter you wish to use. The drive must be unused to begin with.



4. Type the folder address exactly as shown:

\\FdproXXXXXX
X\SDCard

Note:

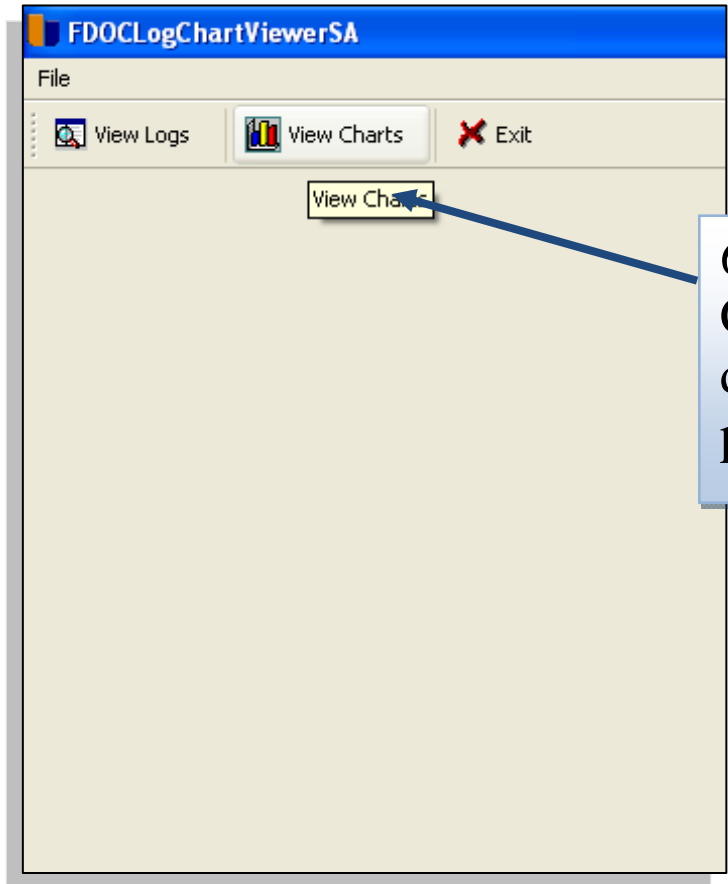
XXXXXX – last
6 digits of
FDPRO serial
number.

Click Finish.

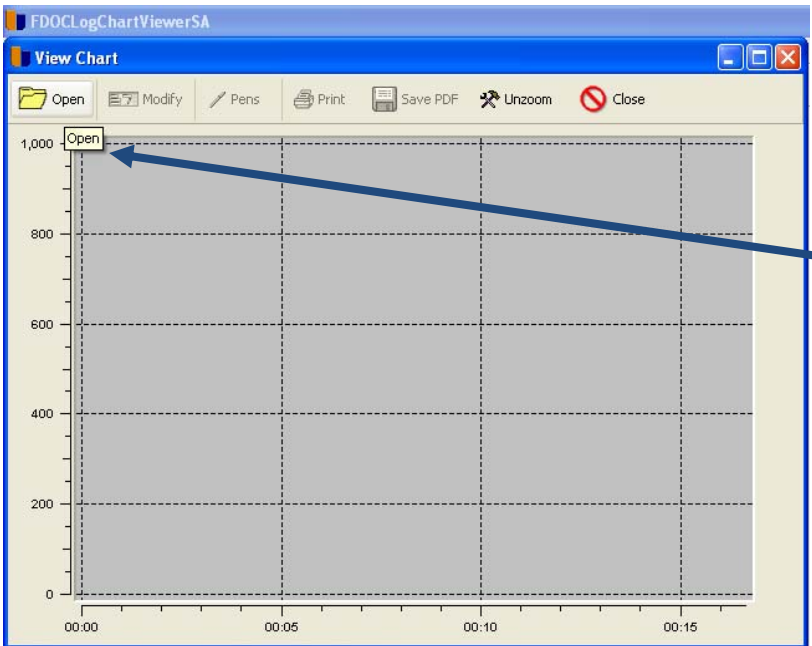


5. Click on the
FDLOGVIEWER
icon on your
desktop.

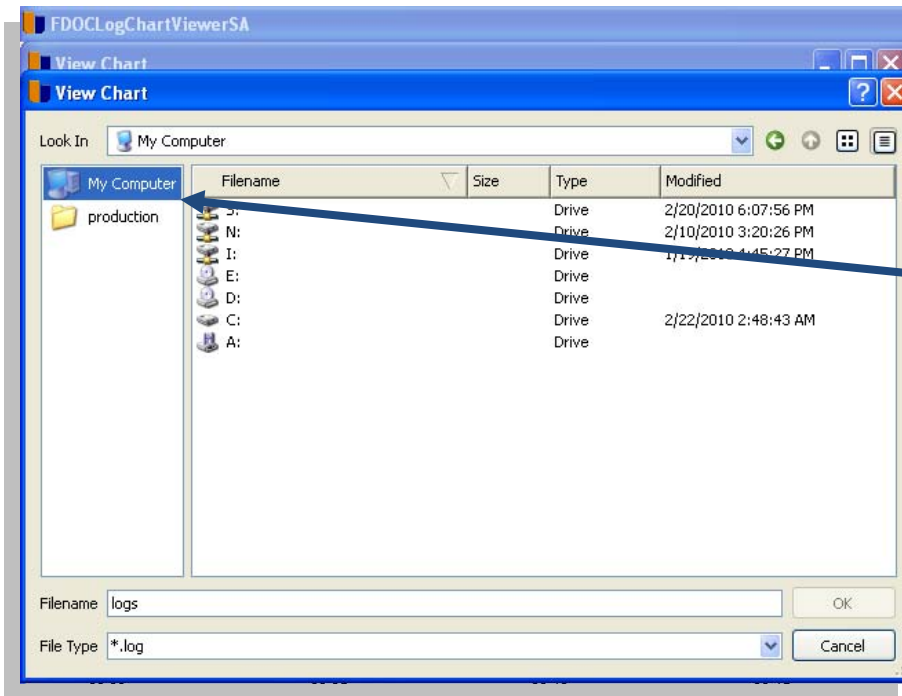
This application
is on the CD that
comes with your
FDPRO.



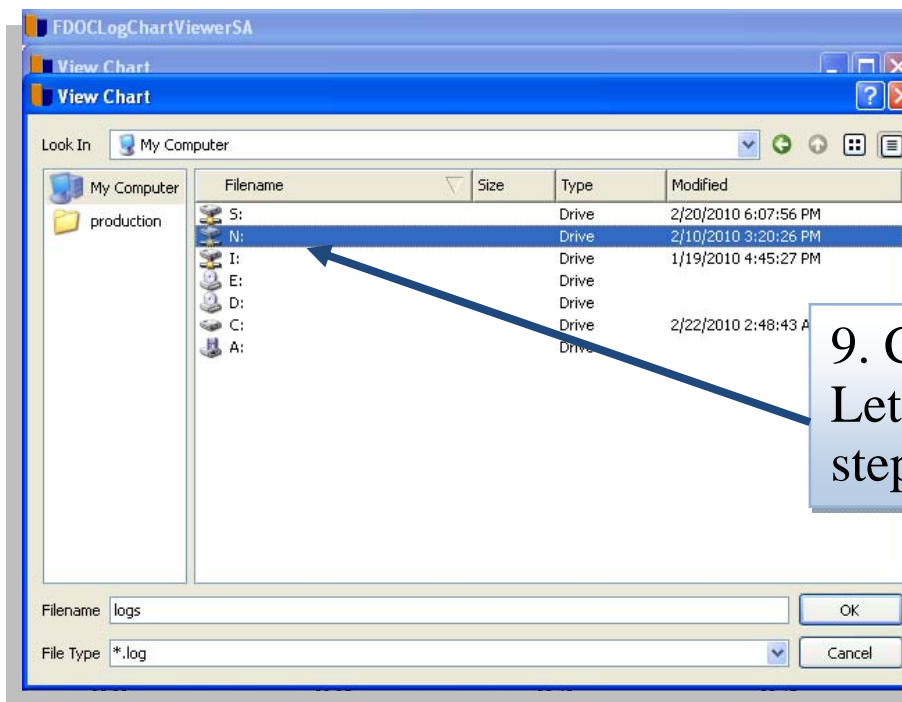
6. Click on View Chart or View Logs, depending on your preference.



7. Click the OPEN folder



8. Click on My Computer



9. Click on the drive Letter you selected in step #3.

